



October 12, 2010 **BEATTIE BIGHORN NEWS**

*R.A.M.S. – Respect Always Means Success*

## IMPORTANT DATES

MONTH+ DAY	TIME	EVENT
October 11-14		Scholastic Book Fair (see notes later in newsletter)
October 12	3:08	First quarter report cards sent with students in 1 <sup>st</sup> -5 <sup>th</sup>
October 12	3:20 - 5:00	School Improvement Team meeting (SIT)
October 12+13	4:00-7:00 p.m.	Beattie Night Out at Raising Cane (2104 S. College Ave.)
October 13	3:30-8:00 p.m.	Parent-teacher conferences
October 14	8:00a.m.-8:00p.m.	Parent-teacher conferences - <b>No classes held 10/14-10/15</b>
October 15	All day	Staff/parent work on innovations plan (info below and on back)
October 18-22		Classified Employees Week (Thanks all "support crew" members!)
October 18	8:30 -11:30	Vision + hearing screening (See note inside)
October 20	1:30 ~ 2:30	Egg drop with Poudre Fire Authority in cul-de-sac
October 20	3:30 - 5:30	Work session on C+C and I+E plans (info below and on back)
October 21	10:30 - 11:30	Blues-in-the-Schools assembly with Hawkeye Herman
October 21	6:30-8:30 p.m.	Beattie Skating Party at Rollerland
October 27	6:30 - 7:15 p.m.	Beattie/Lopez shared work session (info below and on back)
October 29	10:30 + 2:15	Halloween parade + party (info below)
November 3	3:20 - 5:00	School Improvement Team meeting (S.I.T.)
November 4	3:15 - 4:15	Beattie Action Team meeting (B.A.T.)
November 9	Encore class time	Turkey Trot! (info later in newsletter)
November 10	5:00-6:00 p.m.	Final review of C+C and I+E plans (In flex room)
November 24-29	<b>NO SCHOOL</b>	Thanksgiving break (School resumes 11/30)

### PRINCIPAL THOUGHTS.....Mr. Sam Aldern

When our last newsletter was sent we had just received initial information about PSD's underutilized schools process with respect to our school. Obviously, there have been quite a few steps taken since that time as we fulfill our requirement to complete a closure + consolidation plan and an innovations + efficiencies plan. I want to thank all the members of the Beattie community who took the time to submit an input form as well as those who participated in either or both of the parent meetings we have held. Behind this sheet is the latest timeline outlining the remaining steps in this process. A very important step is coming up this Friday, October 15. Students are not in session that day (or 10/14) per the PSD calendar. We are inviting parents/community members to join us that day from 8:30-11:00. Members of CSU's Center for Public Deliberation will be facilitating discussion and decision-making about the innovations + efficiencies plan based on the input we received. Parents and community members who are able to join us for that time are warmly invited to stay for lunch if you can. During the afternoon we will apply our decisions from the morning as we complete applicable parts of the innovations + efficiencies plan. Of course, parents are more than welcome to stay for the entire day. **Please email Sabine DeVoe [sdevoe@psdschools.org](mailto:sdevoe@psdschools.org) if you can participate so we can get an accurate count of participants for the morning work and for lunch.**

We also want to invite all of you who can make it to join us for the Halloween parade on 10/29. It works best for parents and other guests to line the walls of our gymnasium in order to see the parade, which begins at 2:15. Our morning kindergartners will parade through the school at 10:30. Thanks for remembering that all party helpers need to be registered volunteers with PSD. In order to make it a fun experience for all, we ask that costumes are appropriate for school. In part, this means that we don't allow "gory" costumes, fake blood, or weapons of any kind – even pretend ones. Students are asked to not come to school in costume, as time is provided for them to change at school.

Please be sure to read the information in this newsletter about our upcoming 11/9 "Turkey Trot" activity/fundraiser. B.A.T. members have worked very hard to organize this fun event!

For 10.12.10 newsletter  
**BEATTIE TIMELINE FOR**  
 Consolidation/Closure plan and Innovations/Efficiency plan DEVELOPMENT

<b>DATE</b>	<b>TIME</b>	<b>TOPIC</b>	<b>PARTICIPANTS</b>	<b>WHERE</b>
T 10/12	3:20-5:00 Part of this meeting; not all of it	Facilitation plans for 10/15 finalized during regular S.I.T. meeting	S.I.T.	Flex room
T 10/12	3:00	Parent newsletter sent out with summary of work done to this point and revised timeline sent	Parents and staff	N/A
F 10/15	8:30-11:00 CSU Center for Public Deliberation students  11:30-12:15 12:15-3:00	Facilitated small groups of parents + staff to discuss innovation preferences leading to final direction setting Lunch Small groups for researching/working on innovations section of I/E	Interested parents + staff  All participants All available participants	Cafeteria  Cafeteria Flex room, media, classrooms
W 10/20	3:30 – 5:30	Parent + staff work session on efficiencies section and floor plan section of plans	Interested parents + staff	Flex room
W 10/27	6:00 – 7:15	Session w/ combined Beattie + Lopez to address educational benefits section of plans	Interested parents + staff form Beattie and Lopez	Flex room
W 11/3	3:20-5:00 Part of this time, not all	Final S.I.T. review of C/C + I/E plans	S.I.T.	Flex room
W 11/10	5:00-6:00(?) Time TBD 10/20	Final review of C/C + I/E plans	Interested parents + staff	Flex room
Th 11/11	5:00	Submit final C/C + I/E plans	S.I.T.	N/A
TBD	TBD	Beattie C/C + I/E plans presented to Underutilized Schools Advisory Group	Sam One staff? One parent/community?	JSSC



## ATTENDANCE AREA ADJUSTMENT RECOMMENDATIONS

Per page 6 of the PSD Underutilized Schools Plan

([https://eweb.psdschools.org/documentlibrary/downloads/Superintendent\\_Office/Initiatives\\_10-11/Underutilized\\_Schools/Underutilized\\_Schools\\_Plan.pdf](https://eweb.psdschools.org/documentlibrary/downloads/Superintendent_Office/Initiatives_10-11/Underutilized_Schools/Underutilized_Schools_Plan.pdf)), the following information was shared during the October 6 information session held at Beattie. In order to see maps that show current attendance codes for PSD elementary schools, as well as what the recommended changes would look like, please see these maps at Beattie's website (<http://eweb.psdschools.org/schools/beattie/>)

Please contact Principal Sam Aldern directly with any questions, suggestions, or comments about these recommendations ([saldern@psdschools.org](mailto:saldern@psdschools.org) or 488-4228).

If the decision is to close Beattie then the following changes in attendance areas are recommended:

MAP CODE	# STUDENTS IN MAP CODE	RECEIVING SCHOOL	# STUDENTS 9/9/10	REVISED # STUDENTS
6126	138	LOPEZ	373	138 + 373 = 511
6200	46	LOPEZ	373	46 + 373 = 419
6203	67	LOPEZ	373	67 + 373 = 440 [ALL 3 ADDED = <b>624</b> ]
6016	84	JOHNSON	450	84 + 450 = 534

Note: The number of students residing in a given map code does not match the number of students actually enrolled in the assigned school due to students who "choice in" to a different school or who are home schooled.

These changes are recommended in order to keep together as many current Beattie attendance area students as possible without going over capacity at Lopez. Map code 6016 students are bussed to Beattie and live near students who currently attend Johnson.

If the decision is to close Lopez then the following changes in attendance areas are recommended:

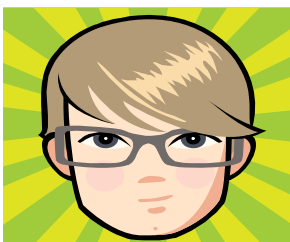
MAP CODE	# STUDENTS IN MAP CODE	RECEIVING SCHOOL	# STUDENTS 9/9/10	REVISED # STUDENTS
6205	156	BEATTIE	291	156 + 291 = 447
6220	37	McGRAW	494	37 + 494 = 531
3560	174	JOHNSON	450	174 + 450 = 624

\*\*\*\*\*

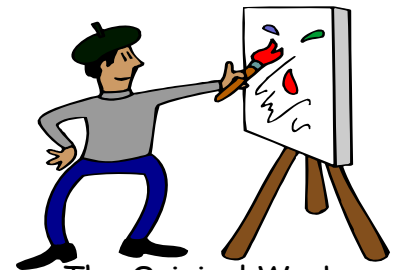
## VISION & HEARING SCREENING MONDAY, OCTOBER 18, 2010

All grades will be tested with the exception of 4<sup>th</sup> grade, which will be for new students and referrals only. These screenings have proven helpful in finding hidden problems that some of our students have so that we can make necessary recommendations. If there are any parents that would be willing to give of their time to volunteer it would be greatly appreciated. Please call Duffy at 488-4225.

**PLEASE MAKE SURE YOUR CHILDREN BRING THEIR GLASSES ON TESTING DAY.**



## Exciting Art Happenings at Beattie Elementary



### Beattie Artists Make a Difference with Original Works Fundraiser

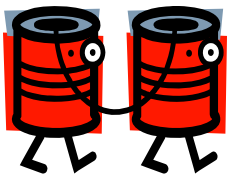
We introduced this program two years ago and have had great success. The Original Works program is a fundraiser that reproduces children's art work to create fun products to cherish as keepsakes or to give as gifts. All the profits raised by the OW program will be used to pay for the Evening for Art Events and a portion will be donated to an organization in honor of International Peace Day in our community. The Original Works fundraiser has many benefits; it celebrates children's art, helps build self esteem, raises funds for our art shows and it empowers students to realize that they can make a positive impact in their school and community.



All students will be bringing home their Original Works packet including their art work with their grade reports. **The deadline for returning your orders will be on Monday October 25th.** Please make sure your student's art work, order form and payment is included in your packet. Return packets to your classroom teachers. This is an optional fundraiser and if you decide not to participate you can keep the art work. If you do participate **we thank you for supporting the arts at Beattie!** All products will be ready in plenty of time for the holidays.

### Mesa Verde MOCA Field Trip

With the help of a community grant, Mesa Verde students were able to visit the William Morris glass sculpture exhibit at the Ft Collins Museum of Contemporary Art (MOCA). This dynamic show is highlighted by a hands-on project presented by visiting artist Stephe Morton from the Children's Art Workshop. Watch for the students' striking art installation of their clay sculptures in the glass case by the office.

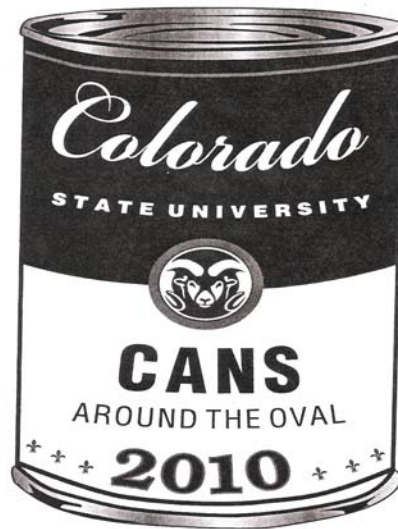


# HELP US CAN HUNGER!



### Kindness Club: Artists Making a Difference

The students have met twice this month to create posters to kick off our first project! We are collecting canned food for *Cans Around the Oval*. If every student brings in 3-4 cans, we could beat last year's record of 800 canned or boxed food items. Beattie will be collecting cans until **October 19<sup>th</sup>**. CSU students will collect Beattie's donation to add to the cans that will line the oval.



## 2010 EVENT SCHEDULE

**SPOONS STONE SOUP**  
PURCHASE AN \$8 TICKET  
FROM SLICE AND REDEEM  
IT FOR A QUART OF  
LOCALLY GROWN SOUP AT  
ALL SPOONS LOCATIONS

**SUPPLY DISTRIBUTION DAY**  
THURSDAY, SEPTEMBER 16,  
ASCSU SENATE CHAMBERS  
9 AM-5 PM

**CONSTRUCTION**  
WEDNESDAY, OCTOBER 13  
CSU PLAZA (10 AM-2 PM)

**OXFAM HUNGER BANQUET**  
THURSDAY, OCTOBER 14  
PARMALEE HALL  
6-8 PM

**COLLECTION DAY**  
WEDNESDAY, OCTOBER 20  
CSU OVAL (10 AM-4 PM)

FOR MORE INFORMATION VISIT [WWW.SLICE.COLOSTATE.EDU](http://WWW.SLICE.COLOSTATE.EDU) OR CALL SLICE AT 970-491-1682

Cans Around the Oval is the largest one-day food drive in northern Colorado and has been a tradition on the CSU campus since 1987. Last year, more than 90,000 pounds of food and over \$27,000 was raised to support the Food Bank of Larimer County, which serves 40,000 people each year.

The Food Bank of Larimer County enjoyed many successes last year thanks to the generous support of surrounding communities, including:

- 27,430 people were served through the FBLC Food Share direct service pantry
- 66,049 Kids Café meals were served to kids in need at six area locations.
- 7.5 million pounds of food was distributed to Larimer County residents

Cans Around the Oval will take place on October 20 when all involved campus and community groups convene to line the CSU oval with canned goods!

Happy fall!  
Kimberly Noel





Come, see, and hear



Mesa Verde presents “Colorado History”  
Thursday, November 18, 2010  
1:45 and 6:00

All MV students should wear a solid colored shirt and blue jeans.  
Students need to arrive at 5:45 p.m.

\*\*\*\*\*

Future Music Events



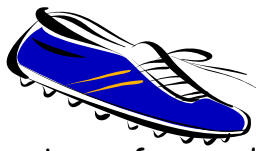
- Auditions for Sunshine Singers will happen the week of December 8, 9, and 10<sup>th</sup>. All Longs Peak and Mesa Verde students are welcome to audition. This extra-curricular choir will meet Thursdays after school beginning January 6<sup>th</sup>, 2011. **(No rehearsal Thursday, January 27<sup>th</sup>.)**
- Mesa Verde and Longs Peak Field Trip to the Fort Collins Symphony January 7 at Timberline Church (Time to be determined)
- Elementary Honor Choir Concert February 15 at 7:00 p.m. at Timberline Church
- Castle Rock Music Program February 17 at 1:45 and 6:00 in gym
- Sunshine Singers Performance April 21 at 10:00 and 6:00 in the gym
- Kindergarten Musical Informances in the flex room
  - Kimball: May 6 at 11:10
  - Wagner: May 11 at 11:20
  - Easterling: May 12 at 11:20
- Beattie Talent Showcase May 20 at 1:30 in the gym



Susie McCollum, Music Educator 488-4241

Beattie Elementary Wednesday, Thursday, and Friday [smccollu@psdschools.org](mailto:smccollu@psdschools.org)





## PE and WELLNESS NEWS with Coach Mueller



Thank you for sending your children to school with tennis shoes on PE days. It is much safer and more enjoyable for the children to have proper footwear when running and playing. So far, I have been able to award four classrooms prizes that they earn when every student wears tennis shoes to gym class.

We have just finished our soccer unit and had a ball learning about the sport and being able to play outside. Next week we move on to fitness testing and then flag football. Our annual Halloween obstacle course will be coming up at the end of the month and then we will be getting ready for November events.



On Tuesday, November 9<sup>th</sup> all students will participate in the **Beattie Turkey Trot**. This is a one mile fun run around the school. Third, fourth and fifth grade students will predict their finish time (based on two practice runs) and the students who come closest to their predicted time win the race. Kindergarten, first and second grade students run for fun. Everyone will participate with their entire grade and it will take place during regular PE class time. Students will receive a healthy snack after they complete the run. If you can help, please let me know. I need as many parents as possible to make this a great race for your children. Please see the information later in this newsletter regarding an exciting fundraising opportunity!

Contact me at [mmueller@psdschools.org](mailto:mmueller@psdschools.org) to let me know when you are available. Thank you!

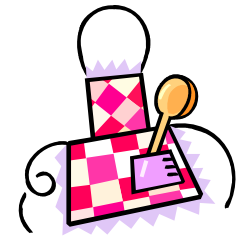
Speaking of running... **The Get-Up-and-Go** running club, which meets **Monday after school until 3:50**, is off to a great start thanks to the many parents and students who have been coming out to run while spending some extra time with their friends. Parents, thank you for allowing your children to come. We are all having a good time while doing something healthy. Ten students have already earned their first "foot pendant." After completing 25 laps, they will receive a necklace and foot charm. This is just the first marker of success - there are many more charms that the Beattie athletes can earn. If you still want to join the club, please pick up a permission form from me. **Congratulations to all!**

Speaking of having a good time...**Every Wednesday**, all students are invited to join the wellness team, teachers and other Beattie staff to walk around the east field in an event we call "**lunch laps**." Every week the number of participants grows and grows. Last week 101 people came out for a walk!! Oh, the fun we are having!! Please encourage your children to join us. It's a big field - big enough for the entire school - and the wellness team would love for the numbers to keep growing.



**ROLLER SKATING PARTY...October 21<sup>st</sup>** is our first (of three) roller skating parties. Please join us at Rollerland for an evening of fun and exercise. Beattie students, parents and family are all welcome for this exciting event. It is a great break from the usual evening routine. The kids talk about the roller skating parties and the fun they had for days - and you should see them improve their skills after just one night of skating!

Finally, the Beattie Wellness Team is introducing a new contest...



### Put on your apron...

This year the PSD Nutrition Department has been featuring a healthy fruit or vegetable of the month. In our effort to promote healthy food choices, the Wellness Team is proud to present the first annual "Put on Your Apron" recipe contest! Each month, Beattie students can submit their favorite recipes that use the featured fruit or vegetable.

<u>Month</u>	<u>Fruit/vegetable</u>
August	Plums
September	Pears
October	Apples
November	Pumpkin
December	Kiwi
January	Oranges
February	Grapes
March	Sweet Potatoes
April	Snap Peas
May	Strawberries



Until the end of October, we are accepting recipes for the months of August, September, and October. Please submit recipes to Cassidy Kimball at [ckimball@psdschools.org](mailto:ckimball@psdschools.org) or a printed copy can be sent to the office. Monthly prizes will be \$10 gift cards to Sports Authority. All recipes will be included in a Beattie fruit and vegetable cookbook which will be available at the end of the school year.

*Remember... Every time your child participates in a Wellness activity, they sign in and then their name gets put into a hat. Towards the end of the year, we will draw two names and those lucky winners will go home with a new bike and helmet.*

\*\*\*\*\*

## Here's to Our Heros - Reading Saves the Day

Beattie Scholastic Book Fair is here!



The book fair will be open after school **Tuesday, October 12 and Wednesday, October 13**. We will also be open during conference times, **Wednesday evening 5 - 8 pm and all day Thursday 8am - 8pm**. The book fair will be taken down Friday, so there will be no sales on Friday.

*Thanks for supporting reading and our library!*



The Beattie  
Bighorns

Annual

# Turkey Trot

Dear parents and friends of Beattie:

The Beattie Bighorns' Turkey Trot is a BIG fundraising event for the Beattie Action Team (BAT). This event allows students to raise money for the school while promoting health and wellness.

Our goal is to raise \$15,000 with 100% of the money collected going back to the school and to reward students. No money will go to third party vendors. A portion of the proceeds pledged will go to Beattie's PE Department to purchase badminton nets and equipment.

On *Tuesday, November 9th*, every student will run or walk laps around the 1-mile marked course during their regularly scheduled PE time. Families are welcome to come support or join in. Students will earn prizes for the money pledged. Because this is not a per lap pledge event, all donations will be collected before the event. All students will receive a snack of string cheese and apples, a Texas Roadhouse free kid's meal token as well as a Turkey Trot T-shirt regardless if they collect donations. We are striving for 100% participation from our amazing Beattie Students!

Beattie Vision statement: The Beattie community supports continuous growth with high expectations in a safe and positive environment to inspire a love of learning.

Mission Statement: EDUCATE THE WHOLE CHILD.

Our goal this year is to continue to purchase more technology for the classrooms, fund teacher grant requests, contribute to programs such as Accelerated Reader, Book Trust, Big Foot Mileage Club, and Field Trip scholarships – to name a few. BAT also utilizes these funds to show appreciation for our teachers and staff throughout the year. Your pledges are truly valued and support our teachers, children, and the greater Beattie Community. Thank you!

*The Beattie Action Team*  
BAT



The Beattie Bishorns

# Turkey Trot Pledge Form

- Please make checks payable to B.A.T.
- Pledge money is due by November 5th with the order form!

Student Name \_\_\_\_\_  
 Teacher \_\_\_\_\_  
 Total Pledge \$ collected: \$ \_\_\_\_\_  
 Prize Choice \_\_\_\_\_  
 Parent Signature \_\_\_\_\_  
 Phone \_\_\_\_\_

Name	Address	Pledge Amount \$
1.		
2.		
3.		
4.		
5.		
6.		
7.		
8.		
9.		
10.		
11.		
12.		
13.		
14.		
15.		
16.		
17.		
18.		
19.		
20.		
21.		
22.		
23.		
24.		
25.		

**Safety First!! NO DOOR TO DOOR pledges! Ask ONLY friends and family.** Pledge page total \$ \_\_\_\_\_



# Prize List

*Pledges due November 5, 2010*

All Beattie Students will receive a Turkey Trot T-shirt and a Texas Roadhouse free kids meal token!

- |                         |  |
|-------------------------|--|
| <b>\$20 in pledges</b>  | \$4 kids meal at Subway; or Hackysack  |
| <b>\$40 in pledges</b>  | \$5 Gift Certificate; or Four square ball; or Velcro Catch Set   |
| <b>\$60 in pledges</b>  | \$10 Gift Certificate; or Soccer Ball; or Whamo Tracball; or Nerf Football   |
| <b>\$80 in pledges</b>  | \$15 Gift Certificate; or Foxtail; or Snowsled; or Swim Goggle   |
| <b>\$100 in pledges</b> | \$20 Gift Certificate; or Pedometer; or Hula Hoop; or Cup Stacking Set   |
| <b>\$150 in pledges</b> | \$30 Gift Certificate; or Tournament Soccer Ball; or Baseball; or Volleyball; or Baseball Glove; or Softball Glove; or Composite Football; or Camelbak water pak |
| <b>\$200 in pledges</b> | \$50 Gift Certificate; or Popup Soccer Goal; or Halex Hockey game table  |
| <b>\$250 in pledges</b> | \$80 Gift Certificate; or I-Pod Shuffle; or Pulse Kick Scooter; or Airwalk Longboard   |

*The student that collects the most pledge money over the \$250 pledge level receives TWO prize selections.*

## **Gift Certificate Choices**

Walmart; Target; Sports Authority; or Big 5 Sporting Goods

*Students earn ONE prize at the highest pledge level obtained, pending parent approval. Prizes are not cumulative.*



# BEATTIE ACTION TEAM (BAT)

Go to BAT for your children!

Please join us at the next BAT meeting on November 4th at 3:15 in the Beattie Media Center. All parents are welcome and childcare will be provided for those who need it.

\*\*\*\*\*



Tuesday & Wednesday, October 12 & 13, 2010  
4PM to 7PM

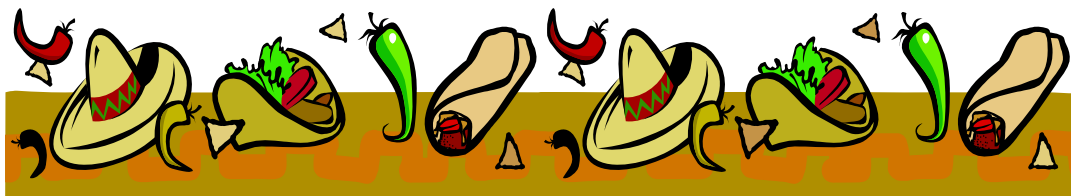
October's Beattie Night Out will be at Raising Cane's. Purchase a chicken finger BOX COMBO or KID'S MEAL and Beattie will receive 20% back! Just remember to mention you are with Beattie so our school gets the credit. No voucher is necessary, so pass this information on to your friends and family!

\*\*\*\*\*

## QDOBA COUPONS

To maintain Beattie's policy of no door to door fundraising by students, BAT has once again teamed with Qdoba to offer coupons. With three locations around town, what is easier than using a coupon to buy a quick meal? Qdoba coupon sheets are available for purchase at the front office for \$10.00. The coupon page features a dozen great Buy One/Get One deals as well as a free kid's meal and free chips + queso order with purchase. A bargain at the price! And the best part...Beattie keeps 80% of the proceeds! Coupon sheets are available for purchase in the Beattie office and the expiration is 8/31/11.

Plenty of time to enjoy a delicious meal!



**Qdoba**  
MEXICAN GRILL

*community*  
**FUNDRAISER**

**80% of the \$10 donation goes to:  
(\$65 VALUE FOR ONLY \$10)**

Seattle Elementary School  
3000 Meadowlark  
Fort Collins, Colorado 80526

\*Qdoba and Qdoba Mexican Grill are registered trademarks of the Qdoba Restaurant Corporation ©2009



**BUY ONE GET ONE FREE**  
**Queso Burrito**  
(with purchase of any Queso Burrito and a regular drink)



**BUY ONE GET ONE FREE**  
**Small Breakfast Burrito**  
(with purchase of any small Breakfast Burrito and a regular drink)



**BUY ONE GET ONE FREE**  
**Mexican Gumbo**  
(with purchase of any Mexican Gumbo and a regular drink)

**INVALID \$\$\$ INVALID \$\$\$ INVALID**

NO SUBSTITUTIONS. Limit 1 coupon per visit. Offer valid at Fort Collins, Loveland, Greeley, Longmont, Firestone, Cheyenne, and Laramie locations only. Expires 8/31/11

**Qdoba**  
MEXICAN GRILL

Cheyenne, and Laramie locations only. Expires 8/31/11

**Qdoba**  
MEXICAN GRILL

Cheyenne, and Laramie locations only. Expires 8/31/11

**Qdoba**  
MEXICAN GRILL



**BUY ONE GET ONE FREE**  
**Craft 2™**

**10% OFF CATERING**  
with Hot Bar purchase for 20 or more



**FREE KIDS MEAL**  
(with purchase of an adult entrée)

**INVALID \$\$\$ INVALID \$\$\$ INVALID**

NO SUBSTITUTIONS. Limit 1 coupon per visit. Offer valid at Fort Collins, Loveland, Greeley, Longmont, Firestone, Cheyenne, and Laramie locations only. Expires 8/31/11

**Qdoba**  
MEXICAN GRILL

Loveland, Greeley, Longmont, Firestone, Cheyenne, and Laramie locations only. Expires 8/31/11

**Qdoba**  
MEXICAN GRILL

NO SUBSTITUTIONS. Limit 1 coupon per visit. Offer valid at Fort Collins, Loveland, Greeley, Longmont, Firestone, Cheyenne, and Laramie locations only. Expires 8/31/11

**Qdoba**  
MEXICAN GRILL



**BUY ONE GET ONE FREE**  
**Naked Burrito**



**BUY ONE GET ONE FREE**  
**Taco Salad**



**FREE CHIPS & QUESO**  
With the purchase of any entrée.

**INVALID \$\$\$ INVALID \$\$\$ INVALID**

NO SUBSTITUTIONS. Limit 1 coupon per visit. Offer valid at Fort Collins, Loveland, Greeley, Longmont, Firestone, Cheyenne, and Laramie locations only. Expires 8/31/11

**Qdoba**  
MEXICAN GRILL

per visit. Offer valid at Fort Collins, Loveland, Greeley, Longmont, Firestone, Cheyenne, and Laramie locations only. Expires 8/31/11

**Qdoba**  
MEXICAN GRILL

per visit. Offer valid at Fort Collins, Loveland, Greeley, Longmont, Firestone, Cheyenne, and Laramie locations only. Expires 8/31/11

**Qdoba**  
MEXICAN GRILL

# CHICK-FIL-A FUNDRAISER

Monday through Saturday from 6AM to 10:30AM

Chick-Fil-A has chosen Beattie as a test school for their newest fundraiser. For the rest of the school year, anytime you eat breakfast at Chick-Fil-A just send your receipt in to the school and at the end of each month we will redeem them at Chick-Fil-A. Beattie will get 10% of that month's receipt totals.

*Thank you for doing so much to support Beattie students.*



\*\*\*\*\*

## Integrated Services

Sign-up to receive newsletters, flyers on parent classes and other relevant information from the Integrated Services Department electronically!

Just go to <http://eweb.psdsschools.org/emailsubscription/> fill out your information and choose special education.

Nikki Arensmeier, Special Education Parent Liaison  
[earensme@psdsschools.org](mailto:earensme@psdsschools.org), 490-3225

\*\*\*\*\*

## **B.A.S.E. CAMP**

**B.A.S.E. Camp's 3<sup>rd</sup> Annual Fall Children's Carnival** will be held this year at Riffenburgh Elementary School, Saturday, October 23, noon to 3pm. Admission is free, and tickets for games, activities, and fun food cost 50 cents each.

The first 100 children will receive a free "earth ball" that looks like a small globe but bounces like a super ball. Games are carnival-style (bean bag toss, fishing, etc.), and raffle prizes include a Nintendo DS and various other items including gift certificates to The Cupboard, Reader's Cove, and Great Harvest Bread.



Thanks to Cargill Industries, Chippers, CSU Greeks, The Cupboard, Fort Collins Speech and Reading Center, Great Harvest Bread, Nature's Own, North Beach Dental, Readers' Cove and Poudre School District for their support.





Rocky Mountain High School Student Council  
Proudly Presents



# TRICK-OR-TREAT STREET

Thursday, October 28, 2010

5:00-7:30 pm

FREE to children 12 and under with adult supervision at

ROCKY MOUNTAIN HIGH SCHOOL

1300 WEST SWALLOW ROAD

Come enjoy some spooky fun through the halls of Rocky!

[Hello again from the CSU Chemistry Club!](#)

This year's Halloween event will be held at the CSU chemistry building on **Friday, October 29, from 6:30 to 9 pm**. At the event students will have a chance to participate in safe trick-or-treating while learning about chemistry and watching very cool demonstrations! The event is free and open to the public, and we encourage students of any age, as well as parents, to attend. It's a great way for kids and their families to enjoy the holiday in a safe and educational environment. As always, we do accept donations, but we want to emphasize that the program is **FREE**.

Thanks so much for supporting the CSU Chemistry Club in our mission to bring science to students of all ages!



# NOVEMBER 2010 SCHOOL NEWS BRIEFS

For more information, contact:

Jody Margheim, communications specialist, (970) 490-3543, [jody@psdschools.org](mailto:jody@psdschools.org)

## 1. PSD Calendar of Events, November 2010

November 9, 6:30 p.m., Board of Education business meeting, JSSC Conference Center

November 23, 6:30 p.m. Board of Education business meeting and work session, JSSC Conference Center.

November 24-26, NO SCHOOL – THANKSGIVING BREAK

November 29, NO SCHOOL for elementary and middle school students (K-8), Teacher Collaboration Day

## 2. PSD School Closure and Weather-Related Plan

Please review the information below regarding 3 school closure situations, if needed, due to weather or other reasons: **(1) 2-hour delayed start; (2) school closure; or (3) early release.**

Please Note: If all schools are open, no calls/emails will be made to parents, announcements by the media or on the PSD website. Please do not call schools, district offices, or broadcast media. If schools are closed, parents and staff will be notified by email and the PSD voice messaging system, and on the PSD website at [www.psdschools.org](http://www.psdschools.org). Please keep your email and phone contact information current.

Note: When PSD schools are closed, B.A.S.E. Camp will be closed. If schools are running a delayed start schedule, B.A.S.E. Camp will open as normally scheduled.

Should the need arise due to bad weather and/or questionable road conditions, PSD may implement a delayed start of all schools by 2 hours. The following is important information for parents regarding delayed start, as well a refresher on school closure and early release plans.

### Delayed Start of Schools Due to Weather, Road Conditions

**Should the need arise, the delayed school start time will be 2 hours, for all schools.**

- **Delayed start decision:** A decision about delayed start will be made by 5:30 a.m.
- **Parent notification:** visit the PSD website at [www.psdschools.org](http://www.psdschools.org) or tune in to local radio or television stations to find out about delayed start the morning of the day in question. Please do not call schools, district offices, or broadcast media. No announcements by media and on the website means all schools are open as usual.
- **Bus pick up times:** Buses will pick up students at bus stops 2 hours later than regularly scheduled pick-up times. Buses will make every effort to be punctual, although traffic and road conditions may increase travel time. Please ensure your child is dressed warmly in anticipation of a potentially longer wait time. Parents are encouraged to walk their children to bus stops and avoid walking along the roadways. Sidewalks are safer even if these areas are not cleared of snow.
- **Drop off and arrival times:** Parents dropping off students, students who walk, and students driving to school should arrive 2 hours after their regular arrival times. Please do not arrive earlier.
- **Kindergarten and Early Childhood:** Morning-only kindergarten programs and morning Early Childhood programs are cancelled when there is a delayed start schedule. Afternoon kindergarten and afternoon Early Childhood programs will run on normal schedules. Full-day kindergarten and full-day Early Childhood programs will start 2 hours later than normal.
- **Before- and after-school childcare:** B.A.S.E. (Before and After School Enrichment) Camp will open as normally scheduled for students attending these programs. If your childcare provider is other than B.A.S.E. Camp, contact them for start times.
- **School dismissal times:** School dismissal times will remain on regular schedules, including bus drop-off times in neighborhoods and parent pick-up times at schools.

## School Closures Due to Weather, Road Conditions

If schools are closed due to inclement weather and/or questionable road conditions, parents should tune in to local radio and television stations, or go online to PSD's website at [www.psdschools.org](http://www.psdschools.org) to find out about school closures the morning of the day in question.

**Media outlets are informed if schools are closed.** No announcements by the media or on the PSD website means all schools are open as usual.

A decision about weather-related school closures is made by 5:30 a.m., and media outlets are notified immediately. **Parents should NOT call schools, district offices, or broadcast media.**

**The PSD website ([www.psdschools.org](http://www.psdschools.org)), radio and television stations will provide information about PSD school closures.** We will notify Spanish radio stations KGRE 1450AM and KJJD 1170AM for Spanish speaking families.

**Note:** When PSD schools are closed, B.A.S.E. (Before and After School Enrichment) Camp will be closed.

## Early Release of Schools Due to Weather, Road Conditions

If the weather forecast suddenly changes to adverse conditions, PSD may put into action an early release. Parents are urged to please develop a plan for the possibility of your student's early release to your home. B.A.S.E. (Before and After School Enrichment) Camp will not be available after school if schools release students early.

*When PSD makes a decision to close schools earlier than the regularly-scheduled release times due to inclement weather and/or questionable road conditions, parents will be notified by phone. In addition, media outlets and the PSD website ([www.psdschools.org](http://www.psdschools.org)) also will communicate early release information.*

**Parents are urged to make sure family contacts and telephone numbers are current at your child's school for such an emergency.**

For additional information about the policy and procedures, contact Scott French, PSD director of transportation, at 490-3555.

---

### **1. El PSD está emocionado por ofrecer acceso a una computadora en Walmart**

Ahora puede tener acceso a la información del Distrito en una computadora localizada en *Walmart SuperCenter*, ubicada en 1250 E. Magnolia, Fort Collins. La computadora del PSD, la cual está disponible durante el horario regular de funcionamiento del negocio en mención, le da acceso al sitio *Web* del Distrito Escolar Poudre, el cual incluye noticias y eventos de última hora del Distrito, así como información acerca de las inscripciones escolares, el servicio de transporte, los calendarios y las normas del Distrito. También tiene acceso a datos específicos sobre su hijo/a a través del PORTAL PARA LOS PADRES DE FAMILIA en el sitio *Web* del PSD. Queremos informarle que esta computadora no tiene acceso a correos electrónicos o sitios de Internet por fuera del sitio *Web* del Distrito Escolar Poudre. El PSD agradece a *Walmart SuperCenter* su asociación con el Distrito para llevar a cabo este proyecto.

### **2. La solicitud para la Selección de Escuela por Internet, para el año escolar 2011-12, está disponible al público**

La solicitud para la Selección de Escuela por Internet ya está disponible al público en [www.psdschools.org](http://www.psdschools.org), bajo "Parents" ("Padres de familia"). Después haga clic en el enlace de la izquierda "School Choice" ("Selección de Escuela"), y luego en "Online School Choice Application – Spanish" ("Solicitud para la Selección de Escuela – Español"). Se puede tener acceso a dicha solicitud desde una computadora en casa, o cualquier computadora con conexión a Internet. Puede utilizar una computadora pública, ya sea en el Centro de los Servicios de Apoyo del PSD ("Support Services Center"), 2407 LaPorte Ave., o en cualquiera de las escuelas del Distrito. Las fechas límite de la primera consideración para el año escolar 2011-12 se dan a continuación:

- **28 de enero de 2011, para la secundaria (6º a 12º grado)**
- **11 de febrero de 2011, para la primaria (kínder a 5º grado)**

Las solicitudes para la Selección de Escuela pueden presentarse después de la fecha límite de la primera consideración, hasta el primer día de clases, al inicio del año escolar en el cual se está solicitando la admisión. Para obtener mayor información, puede leer la norma del PSD con respecto a la Selección de Escuela, así como las fechas límites correspondientes, en el sitio *Web* del Distrito.

### 3. El PSD informa sobre la norma referente al trato de estudiantes y padres de familia

Al PSD le gustaría informar a los padres de familia acerca de la norma que asegura un trato adecuado a los estudiantes, padres de familia o tutores y el público en general. A continuación se presenta un resumen de esta norma; si le interesa tener acceso a esta norma en su totalidad, puede ir a [www.psdschools.org/sites/default/files/EL\\_2-1\\_Treatment\\_of\\_Students\\_Parents-Guardians\\_and\\_General\\_Public.pdf](http://www.psdschools.org/sites/default/files/EL_2-1_Treatment_of_Students_Parents-Guardians_and_General_Public.pdf). Si desea solicitar que se le envíe una copia, por favor contacte la escuela de su hijo/a.

La norma de LIMITACIÓN EJECUTIVA DE LA JUNTA DE EDUCACIÓN 2.1 hace hincapié en la importancia que el PSD obtenga la opinión del público en la toma de decisiones; recopile información apropiada; guarde de manera segura los datos de los estudiantes; asegure que las medidas disciplinarias sean apropiadas y consistentes; provea instalaciones escolares seguras y de fácil acceso; proporcione un acceso imparcial y razonable a las actividades que no causen interrupción; suministre a las familias opciones educativas; comuníquese claramente las expectativas sobre el estudiante; ponga en práctica el calificar el trabajo escolar de manera consistente, dentro de un marco de tiempo apropiado; responda a las preguntas; nunca tome represalias contra los estudiantes, ni los padres; use reglas escritas que afirmen las expectativas, estándares y procedimientos de la escuela; siga los procedimientos internos de los motivos de queja, y si es del caso, contacte a la Junta de Educación en caso del quebrantamiento de la norma; y dé a conocer a las familias, las diversas maneras por las cuales pueden presentar sus inquietudes con respecto a la educación de los estudiantes.

### 4. ¡Se necesitan voluntarios!

Si tiene tiempo para compartir alguna de sus habilidades y destrezas, podría causar un gran impacto en las vidas de nuestros estudiantes. Por favor comuníquese con Cyndi Gile, del Centro de Asociaciones y Voluntarios (*Partnership and Volunteer Center*), al correo electrónico [cynthiag@psdschools.org](mailto:cynthiag@psdschools.org), o llamando al teléfono al 490-3208. ¡Tenemos muchas oportunidades a disposición de ustedes!

### 5. ¡Se buscan negocios y asociados de la comunidad en los salones de clase!

¿No le parecería divertido volver a la escuela? ¡Tenemos la oportunidad perfecta para usted! El Programa de Voluntarios y Asociaciones (*Volunteers and Partnerships Program*) está buscando personas de negocios que puedan visitar los salones de clase, y explicar a los estudiantes cómo decidieron seguir su carrera profesional, lo que conlleva esta última y el trabajo día a día, y qué clase de preparación académica se necesita. Si desea ser parte de esta gran oportunidad, en donde podrá compartir sus experiencias con los estudiantes, por favor comuníquese con Kris Cord, al correo electrónico [kcord@psdschools.org](mailto:kcord@psdschools.org), o al teléfono 490-3207, ó con Cyndi Gile, al correo electrónico [cynthiag@psdschools.org](mailto:cynthiag@psdschools.org), o al teléfono 490-3208.

### 6. Ha llegado la temporada de la influenza, ayude a controlar la propagación de gérmenes

Ha llegado la temporada de la influenza, y es momento para empezar a poner en práctica las estrategias para prevenirla. Usted nos puede ayudar de la siguiente manera:

- Anime a sus niños a que tengan una **alimentación, sueño y hábitos de ejercicio saludables**.
- **Enséñele a los niños a lavarse las manos** frecuentemente con jabón y agua, o con un desinfectante para manos a base de alcohol.
- **Enséñele a los niños a taparse la boca al toser o estornudar, y a no compartir artículos personales** tales como bebidas, comida o cubiertos sin lavar (tenedores o cucharas), y taparse la boca con pañuelitos desechables, al toser o estornudar.
- **Limpie las superficies y los objetos que su niño toca con frecuencia**.
- **Conozca los signos y síntomas de la influenza**. Los síntomas de la influenza incluyen fiebre (por lo menos 100 grados Fahrenheit, 37.8 grados Celsius), tos, dolor de garganta, secreción o congestión nasal, dolor de cuerpo, dolor de cabeza y fatiga. Algunas personas también pueden vomitar o tener diarrea.
- **No mande a los niños a la escuela si están enfermos**. Los niños que estén enfermos en la escuela se *mandarán a casa*.
- **Deje a los niños enfermos en casa**, por lo menos 24 horas *después* de que no presenten fiebre o síntomas de fiebre, sin usar drogas que la reduzcan.
- **Haga que su familia se vacune** contra la influenza de temporada.

Por favor cerciórese que usted esté en la lista de padres del PSD que reciben información sobre alertas por medio del correo electrónico (*PSD Parent E-mail Alert list*) ([www.psdschools.org](http://www.psdschools.org)), para que así podamos suministrarle una información nueva a medida que esté disponible. Esto también asegura que pueda recibir correos electrónicos con información de última hora provenientes de la escuela de su hijo/a. Se puede obtener información adicional y recursos sobre la influenza en [www.flu.gov](http://www.flu.gov), o puede llamar al 1-800-CDC-INFO (232-4636)