

SAFETY AND SCHOOL ENVIRONMENT

Non-CSAP Course Offerings

Your School Offers	does	does not
• art.....	<input checked="" type="checkbox"/>	<input type="checkbox"/>
• drama or theater.....	<input type="checkbox"/>	<input checked="" type="checkbox"/>
• music.....	<input checked="" type="checkbox"/>	<input type="checkbox"/>
• physical education.....	<input checked="" type="checkbox"/>	<input type="checkbox"/>
• opportunity for civic or community engagement.....	<input type="checkbox"/>	<input checked="" type="checkbox"/>
• internet safety program.....	<input checked="" type="checkbox"/>	<input type="checkbox"/>
• International Baccalaureate.....	<input type="checkbox"/>	<input checked="" type="checkbox"/>
• extracurricular activities.....	<input checked="" type="checkbox"/>	<input type="checkbox"/>
• athletics.....	<input type="checkbox"/>	<input checked="" type="checkbox"/>
• preschool program.....	<input checked="" type="checkbox"/>	<input type="checkbox"/>
• full-day kindergarten program.....	<input checked="" type="checkbox"/>	<input type="checkbox"/>
• before-and-after-school care program.....	<input checked="" type="checkbox"/>	<input type="checkbox"/>

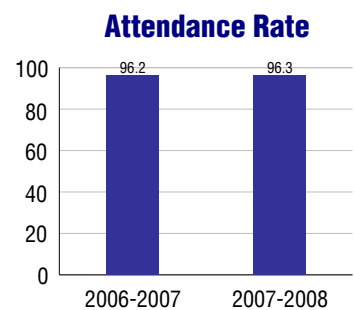
Safety and Discipline

Safe schools are a top priority for parents, teachers, and communities. Your school safety and discipline record for the 2007-2008 school year is:

Type of Incident	Number of Incidents Reported	Percent of Total Incidents
Substance Abuse - Drugs		
Substance Abuse - Alcohol		
Substance Abuse - Tobacco		
Felony Assaults		
Fights		
Possession of Dangerous Weapons		
Other Violations Code of Conduct	4	100.0%

Student Attendance and School Calendar

2007-2008	Your School
Enrollment	517
Average Daily Attendance	498
Student Dropouts	N/A



Student Information Over Time

	2005-2006	2006-2007	2007-2008
Student Enrollment Stability	96.8%	98.3%	94.0%
Students Eligible for Free and Reduced Lunch	3.0 %	6.9 %	8.1 %

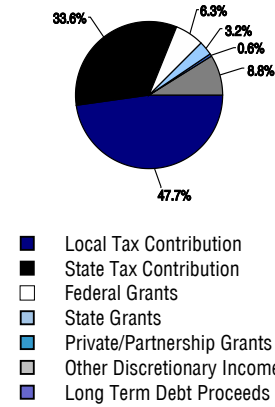
For more information and further details about this report, visit www.state.co.us/schools
 Colorado Department of Education, 201 East Colfax Ave. Denver, CO 80203
Werner Elementary School
 1550/9380/E
 5400 Mail Creek Lane . Fort Collins, CO 80525 . 970-488-5550
 10/20/2008

DISTRICT TAXPAYER'S REPORT

Sources of School District Revenue 2007

Local Tax Contribution	\$114,250,638
State Tax Contribution	80,427,619
Federal Grants	15,050,605
State Grants	7,563,555
Private/Partnership Grants	1,336,324
Other Discretionary Income	21,077,908
Total District Operating Revenue	\$239,706,649
Long Term Debt Proceeds	0
Total District Revenue	\$239,706,649
Total District Operating Revenue Per Pupil =	\$10,027
Total District Revenue Per Pupil (Including Long Term Debt) =	\$10,027
District Per Pupil Operating Revenue =	\$5,711
State Average Per Pupil Operating Revenue =	\$6,080

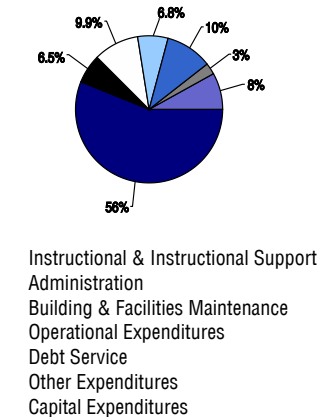
District Source of Funds 2007



District Use of Funds 2007

Instructional & Instructional Support	\$140,809,614
Administration	16,345,848
Building & Facilities Maintenance	24,946,494
Operational Expenditures	16,978,954
Debt Service	25,233,553
Other Expenditures	6,325,146
Total District Operating Expenditures	\$230,639,609
Capital Expenditures	20,503,549
Total District Use of Funds	\$251,143,158

District Use of Funds 2007



District Debt and Capital Construction & Equipment

Total Outstanding Bonded Debt	\$238,809,466
Average Annual Percentage Interest Rate on Debt	4.42%
Amount Raised from Most Recent Bond	\$175,000,000
Amount Spent on New Buildings During Last 2 Years	\$37,207,317

Accreditation

Accreditation is Colorado's primary accountability system, incorporating achievement levels, academic growth, achievement gaps, post-secondary readiness, improvement planning, and compliance. The state accredits districts and districts accredit individual schools.

District Accreditation Status for the 2007-2008 school year:

Voter Approved Funding Changes

Your community did /did not hold an election in November 2006

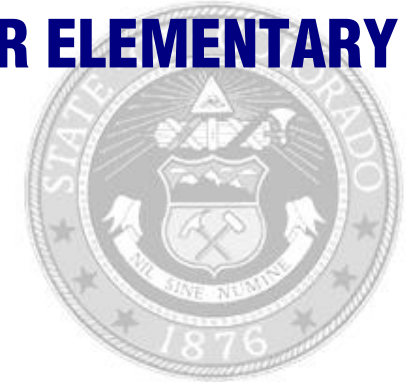
The following items have been approved by voters:

TABOR Override

Bond

Mill Levy Increase

WERNER ELEMENTARY SCHOOL



POUDRE R-1

<http://www.psdschools.org/>
School Accountability Report
2007-2008 School Year

School Performance Summary

Overall Academic Performance on State Assessments **Excellent**

Academic Growth of Students **High**

Winner of a John Irwin School of Excellence for the 2007-2008 School Year

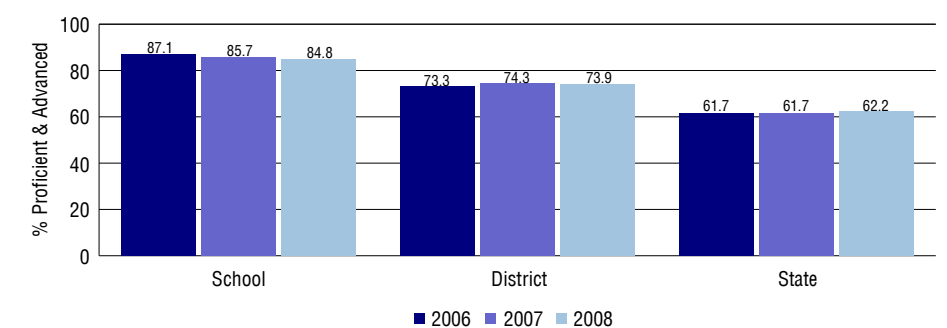
Overall Academic Performance on State Assessments

Each school in the State received a rating of "Excellent", "High", "Average", "Low", or "Unsatisfactory" for student academic performance based on 2007-2008 CSAP and COACT results. The rating is calculated using weighted percentages of each CSAP proficiency level for all content area and grade results for the school, as well as average COACT Reading, Writing, and Math Grade 11 results.

Academic Growth of Students

Each school in the State received a rating of "Low", "Typical", or "High" for student academic growth based on CSAP results. The calculation method is new for 2007-2008. The rating is calculated using student percentile scores matched over two years. More information about the Overall Academic Performance rating and Academic Growth of Students calculations can be found here: http://www.cde.state.co.us/cdeassess/SAR_Info.html.

Percent Proficient and Advanced for Elementary Grades for All Content Areas



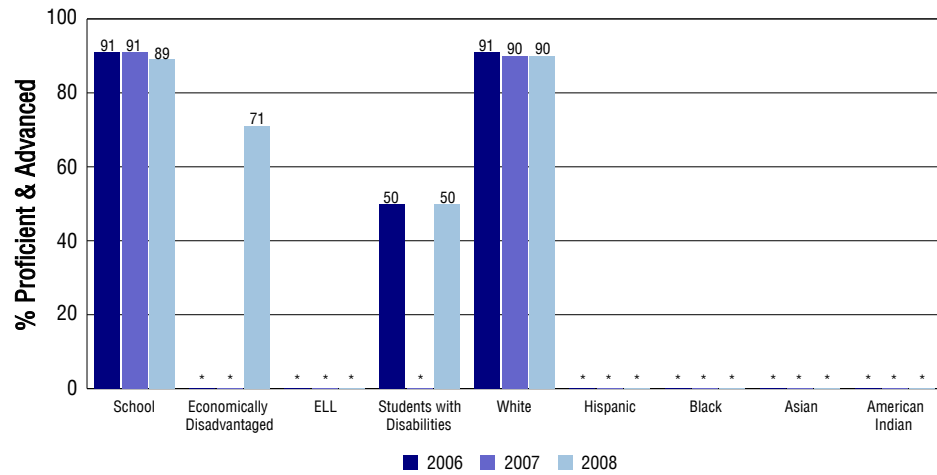
Student Test Scores Used For Calculating Overall Academic Performance

96.2%	Test Scores Counted
1.1%	Test Scores not used due to Language
2.7%	Test Scores not used due to New Student

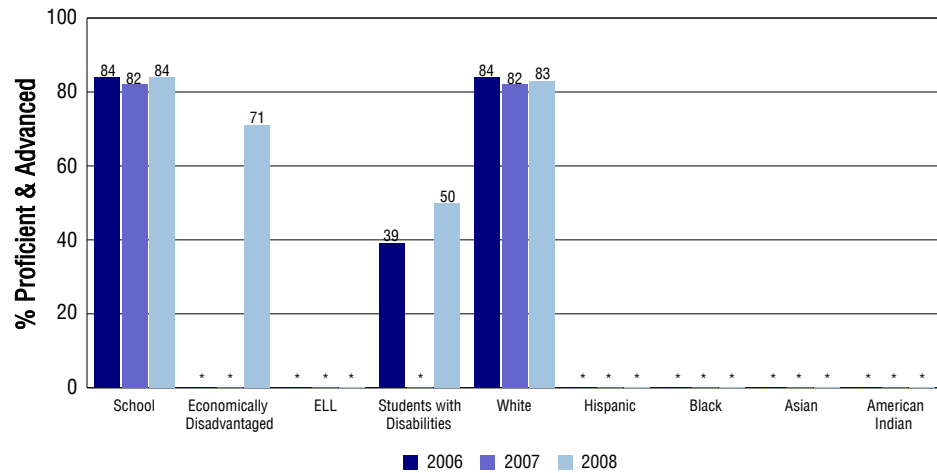
STUDENT PERFORMANCE

These graphs show the percent Proficient and Advanced trends over the past three years for Reading, Writing, and Math. Results are presented for the entire school for all reported grades as well as for different subgroups. Note: * indicates any group with less than 16 student results to be reported.

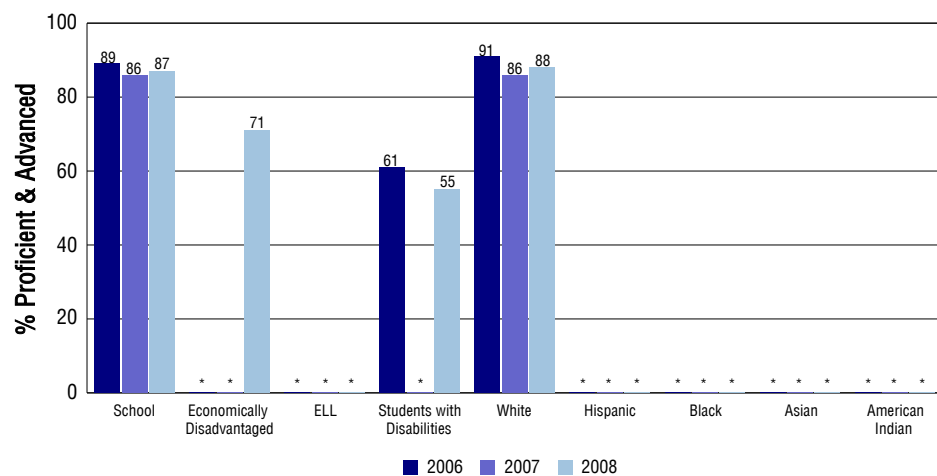
Reading



Writing



Math



SCHOOL INFORMATION

School Pride (as submitted by your district)

- Our staff is experienced and dedicated, with most holding advanced degrees.
- Our students participate in a variety of extracurricular opportunities including math clubs, chess club, robotics, intramurals, choir, student council & others.
- Our parent community is an integral component to our school community.
- Our Adaptive Skills Program provides opportunities for students with disabilities in the regular classroom, which help promote empathy and working with others.

School Goals (as submitted by your district)

The academic goals for all our school is for at least 90% of our students to make a year's growth, or more, as measured by assessments such as CSAP, MAPS (Measures of Academic Progress), and/or DRA2 (Diagnostic Reading Assessment), in Reading, Writing, and Math.

No Child Left Behind - Adequate Yearly Progress

Did your school make AYP in reading?	Yes	Math?	Yes
How many targets does your school have?	12	Met?	12

Based on this school's academic performance, your child may be eligible for one or more of the following; ask your school if your child qualifies for:

Extra academic instruction either before or after-school, or in the summer
Mentoring

For additional information regarding Adequate Yearly Progress please visit
<http://www.cde.state.co.us/FedPrograms/ayp/index.asp>

How Werner Elementary School Compares To Elementary Schools Within A 75-Mile Radius

School	Program Type	Academic Performance	Academic Growth
Northern Colorado Academy Of Arts & Knowledge(1)	Charter	Average	Typical
Mc Graw Elementary School		High	High
Kruse Elementary School		High	High
Bacon Elementary School		High	High
Lopez Elementary School		High	High
Linton Elementary School		High	Typical
Traut Core Elementary School		Excellent	High
Shepardson Elementary School		High	High
Beattie Elementary School		High	Typical
Johnson Elementary School		High	Typical

1 Located in Charter School Institute School District.

ABOUT OUR STAFF

School Employment

Each year, your district reports to the Colorado Department of Education on the number of adults who work in your school, as well as the type of work they do. Last year, your school employed:

	Your School		District	
	Full Time	Part Time	Full Time	Part Time
Teachers	24	3	1350	232
Paraprofessionals	10	5	449	201
Administrators	1	0	94	8
Other Professionals	0	0	180	86
School Support	2	3	612	191
School Counselors	0	1	48	26
School Librarians	1	0	28	7
Total Staff	49		3406	

Students per Teacher Ratio

	Student Enrollment	Students per Teacher
Grade 1	75	19.4
Grade 2	75	19.4
Grade 3	57	19.8
Grade 4	78	20
Grade 5	71	17.6
Grade 6	79	20.4

Professional Experience of Teachers

	Your School	District
Average years of teaching experience	13	11
Percent of teachers teaching in the subject in which they received their degree	N/A	N/A
Number of teachers with Masters or Doctoral degrees	17	879
Teachers with 3 years or more of teaching experience	24	1297
Teachers with less than 3 years of teaching experience	3	285
Number of professional development days	4	4

Salaries

	Your School	District	State
Average Teacher Salary	\$50,486	\$47,380	\$47,494
Average Administrator Salary	\$83,049	\$90,845	\$80,444

Principal: Hayden Camp

Number of years as Principal at this school: 2

Number of years as Principal at any school: 2